



# APE SERVICE BULLETIN

## DEEP FOUNDATION SOLUTIONS

VIBRATORY HAMMER • POWER UNIT • AUGER SYSTEMS • DIESEL & HYDRAULIC HAMMERS  
• DRILL RIGS • HYDRAULIC PILING RIGS • WICK DRAIN INSTALLERS • LEAD SYSTEMS



# #56 C15 / C18 POWER UNIT MUFFLER UPDATE

This is related to the 595 & 765 Power units from 2010 and later. The original style muffler (Image #1) on top, there are weldments that allows no exit path causing the water to sit. This allows the water to slowly work its way into the muffler, ruining the silencer and much more. In order to fix this issue, We have two options we recommend,

Option #1 - Replacing the muffler with the new correct style muffler.

Option #2 - Welding Cover Plate

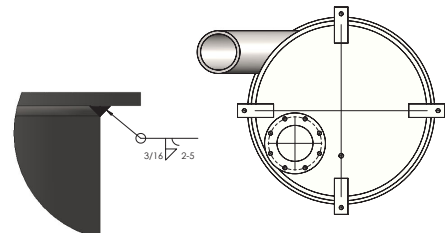
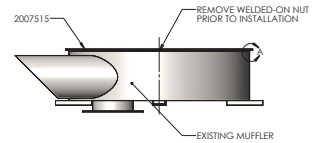
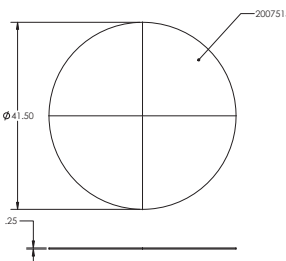
Original Style Example (Image #1) - *Need Replacement!*



Option #1 - New Style Replacement Example



Option #2 - Welded Plate Example



Option #1 -

Replacement Part

2006364 - Pancake Muffler

555031- Exhaust Bellow Gasket

Option #2 - Requires Welding

Added Part

2007515 - Muffler Cover Plate



800-248-8498

WWW.AMERICANPILEDIVING.COM

VISIT US

